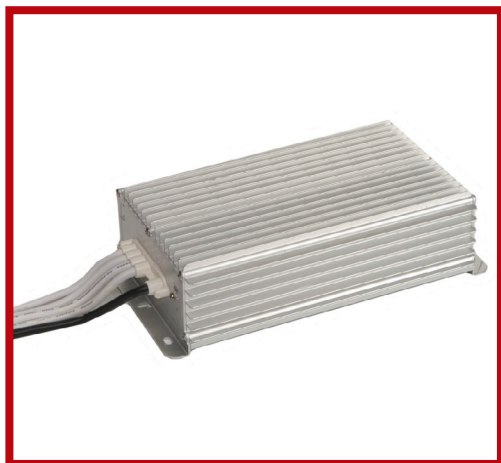


Waterproof Switching Power Supply 100W/12VDC



Model No.: IPLED 100W

Profile:

- 1 PWM switch design, composed by professional integrate circuit, high reliability in performance.
- 2 Abnormality protection function, built-in over current and short-circuits protection. In case of short-circuits or over load, the product will conduct automatic protection.
- 3 Efficiency in energy saving, long life span. Compared with general power supply, it can save 40% energy.
- 4 Suitable for all kinds of LED products which can ensure LED products have good lighting effect and long life span.

Features:

- 1 High efficiency, high reliability
- 2 100% full load burn-in test
- 3 Protections: Short circuit, over load, over voltage, over thermal
- 4 Thunder proof Protection
- 5 Completely air proof, achieve waterproof rate IP 68
- 6 Safety: CE, ROHS, IP66
- 7 1 year warranty
- 8 Size: 205x132x65mm

Specification:

Input Rated Voltage: 170 – 250VAC
Input Rated Frequency: 50/60Hz
Input Frequency Range: 47Hz to 63Hz
Efficiency: 80% Min
Rated Output Voltage & Current: 12VDC/8.3A
Output Line Regulation: $\pm 3\%$
Output Load Regulation: $\pm 5\%$
Output over Shoot: 10% Max
Protection: OCP OVP SCP OPP (recover automatically)
Dielectric Withstand Voltage: AC2KV / 3mA 3s

Environment:

Operating Temperature: -20°C to 70°C
Storage Temperature: -40°C to 85°C



Waterproof Switching Power Supply 100W/12VDC

Feature testing:

Testing QTY		1	2	3	4	5
Testing voltage						
Input		AC220V 50Hz				
High Voltage Test	Input - Output:	OK	OK	OK	OK	OK
	Input- Housing:	OK	OK	OK	OK	OK
Input power (Loading current 12.5A)		123.0W	122.0W	123.0W	123.0W	123.0W
Output voltage (Loading current 12.5A)		12.1V	12.0V	12.0V	12.1V	11.2V
Output voltage (Loading current 0A)		12.0V	12.1V	12.0V	12.2V	12.0V
High low pressure start		OK	OK	OK	OK	OK
Short-circuit:		OK	OK	OK	OK	OK
Over loading:		OK	OK	OK	OK	OK
Verdict:		Pass				